

**Keynote Speakers**  
**Once A Month**  
**Short Courses**  
**Adventures**



# Who we are

**“We”** are the Osher Lifelong Learning Institute (OLLI) at Fresno State: a unique community of lifelong learners, age 50 and better, eager to explore traditional and new areas of knowledge without the stress of tests or grades.

We offer a wide variety of interesting topics with courses in art, history, literature, health, music and science, current events, and so much more. Our offerings are a mix of in-person, online, and hybrid courses and activities. Our curriculum is designed to keep minds and bodies active.

You pay a membership fee to participate in the full range of offerings.

## Your OLLI Membership Includes:

- ▶ Admission to all keynotes
- ▶ One guest pass per keynote
- ▶ Opportunity to enroll in OLLI courses and activities
- ▶ FREE parking for OLLI campus events
- ▶ Information on Fresno State events

Membership fees are non-refundable and non-transferable

**Join us and become part of “we.”**

## Bernard Osher FOUNDATION

There are 124 Osher Lifelong Learning Institutes spanning all 50 states and the District of Columbia. Each is part of a college or university. Our support comes from a grant from the Bernard Osher Foundation, Fresno State, membership and class fees, and donations.



**Barbro Osher  
and Bernard Osher**

*We don't talk about trees  
getting older, we say  
they're "growing."  
Let's use that same  
term for ourselves.  
We're not getting older,  
we're just "growing."  
That's the spirit of living.*



**Keynote  
Speakers**



p.2

**Once A  
Month**



p.3

**Short  
Courses**



p.5

**Adventures**



p.11

**Calendar**



p.18





# Keynote Speakers

## The Magic of Service: Creating a Better You and a Better World

**Chris Fiorentino**

**Thurs., June 12 | 1 to 2:30 p.m.**  
**Satellite Student Union**

Research and personal testimonies show us the powerful ways service and volunteerism can positively affect people serving and people served. In this keynote, we'll hear more from a Fresno State administrator, a student, and an emeriti faculty and fellow OLLI member in a panel discussion. They'll share insights into the research and their personal experiences demonstrating how volunteering can improve your physical, social, and emotional health while creating positive community change. Representatives of local nonprofits will be there, too, to help us directly explore service opportunities. Our guide is Chris Fiorentino, director of Fresno State's Jan & Bud Richter Center for Community Engagement and Service Learning.



## Separating Church from State

**David Diskin**

**Thurs., July 10 | 2 to 3:30 p.m.**  
**Zoom**

Although the words "separation of church and state" never appear in our Constitution, this phrase by Thomas Jefferson has had great impact on our lives and freedoms ever since the Supreme Court referred to it in 1879. But what do these words mean? Why was Jefferson affirming this separation? And how has the First Amendment's Establishment Clause been used to defend the rights of the religious and nonreligious people and groups at every level of our government? In his lecture, David Diskin, a popular Fresno State OLLI presenter, discusses the history of these words and their impact down to today.







# Keynote Speakers

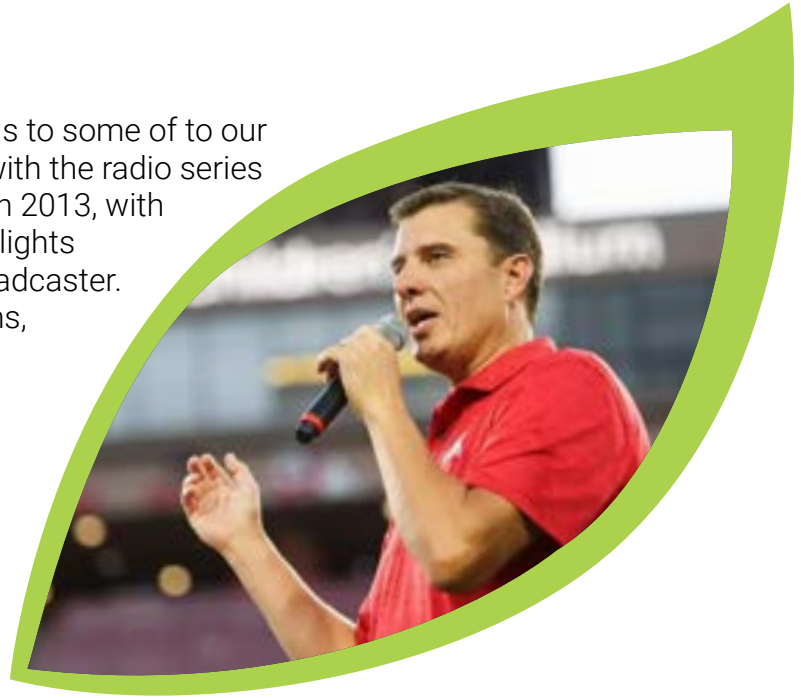
## Thank You for Your Service

**Paul Loeffler**

**Thurs., July 31 | 1 to 2:30 p.m.**

**Satellite Student Union** and **Zoom**

For nearly 20 years, Paul Loeffler has introduced us to some of our region's estimated 5,000 military veterans – first with the radio series “Hometown Heroes” beginning in 2007 and then, in 2013, with Central Valley Honor Flights. The radio series spotlights veterans wherever Loeffler travels as a sports broadcaster. The honor flights, which are paid for with donations, began as a way to honor World War II veterans by providing a free trip to visit military memorials and more in Washington, D.C. There have been more than 30 Central Valley Honor Flights over the years for veterans of World War II, and the Korean and Vietnam wars. In this special OLLI keynote, Loeffler will introduce us to some of our hometown heroes.



## Once A Month

### Let's Talk Sports

**\$20** **Wed., June 4, July 2 | max. 26**  
**1 to 2:30 p.m. | Resnick Student Union 214**

Presenter: **Ken Robison**

It's summer when many sports – baseball, ice hockey, golf, tennis, soccer, motorsports, WNBA, track and field – are in full swing. Meanwhile, football's ramping up, prep fall sports are near, and soon the NBA will be in camp. In short, there's a whole lot of sports to talk about with retired Fresno Bee reporter Ken Robison, who shares his enthusiasm with his classes as a participant, insider, and observer of sports. The class is a golden opportunity for OLLI members to share their memories about athletics past and their opinions about the present and future, too.



# Once A Month



## Current Events

**\$20** **Thurs., June 5, July 3 | max. 26**  
**10 to 11:30 a.m.**  
**Resnick Student Union 214**  
and **Zoom**

Presenter: **Lanny Larson**

Looking for an opportunity to say what you think about local, national, and international news and news media without provoking a big argument? OLLI members have strong views about what's happening, so we gather for a civil, respectful, insightful discussion to learn from each other's opinions, which are informed by our political, sociological, geographical, and ideological experience. Each session is led by Lanny Larson, a former reporter and editor, who spends a lot of quality-time exploring current events from different perspectives so he can keep up with his fellow OLLI members.

**CURRENT  
EVENTS**

## Games You Love to Play

**\$30** **Fri., June 6, 20, July 25 | max. 26**  
**1 to 3 p.m. | Resnick Student Union 214**

Presenter: **Cathy Self**

It was the title of a Monty Python, "And Now for Something Completely Different" perfectly describes a popular Fresno State OLLI offering. Last summer, Cathy Self was part of an experiment that deliberately mixed learning and socializing. Participants learned three card games they could share with others and practice with their OLLI classmates. The experiment worked and now is one of OLLI's quartet of once-a-month offerings. It's an opportunity to unplug from our devices and duties to about some new low-tech entertainment possibilities and make new friends doing it. And did we mention our air conditioning?



## Book Club

**\$20** **Fri., July 11 | max. 26**  
**9:30 to 11 a.m.**  
**Resnick Student Union 214 and Zoom**

Presenter: **Kay Davies**

2024 was a first for Fresno State OLLI's Book Club – a summer read and discussion, just like we've been doing since 2012 every fall and spring. This summer we're focusing on a 20th century American classic novel that was assigned to a lot of high school English classes in the 1950s and 60s – F. Scott Fitzgerald's "The Great Gatsby." This is the 100th anniversary of its publication and a great time to get reacquainted with this Jazz Age novel or read it for the first time, instead of seeing it as a theater or TV movie. Kay Davies, an educator and avid reader, leads our discussion.



# Short Courses



## Climate Resilience in Fresno: Solutions for a Changing Valley

**\$15** Tues., June 3 | 10 to 11:30 a.m.  
ED172 and Zoom

Presenter:

### California Climate Action Corps

Fresno County already feels the effects of climate change — hotter summers, worsening air quality, and increasing strain on water resources. Randall Chevalier, Climate Resilience Fellow with the California Climate Action Corps under the Sustainability Analyst of the Office of the Provost leads this exploration of challenges we face and practical steps we can take to build resilience. Topics include reducing food waste, energy conservation, sustainable transportation, urban greening, and water-wise landscaping. We'll also discuss community-led initiatives and how local advocacy can drive meaningful change. OLLI members will learn actionable strategies to reduce their climate impact and help make our area a more sustainable and livable place for future generations.



## Play Analysis: Shakespeare's Richard III

**\$30** Tues., June 3, Thur. 5, Tues. 10  
1 to 2:30 p.m. | Zoom

Presenter: **Dr. Kim Keeline**

Now is the winter of our discontent ... and the end of the War of the Roses. They're key points in William Shakespeare's "Richard III," just 107 years after his death. Novelist and educator Dr. Kim Keeline's class will learn about this early play based on English history and Shakespeare's title character, whom she describes as "his amazing evil hunchback." We'll look at the brief life of the real Richard, who reigned just over two years and was the last of the Plantagenets; hear why Shakespeare portrayed him as he did; and analyze the play's characters, language, and structure.



*Script provided. Does not include ticket to performances. See adventures to purchase ticket to performance.*

# Short Courses



## British Raj in India: A Troubled Legacy

**\$30** **Fri., June 6, 13, 20**  
**11 a.m. to 12:30 p.m. | Zoom**

Presenter: **Gopal Kapur**

Albert Einstein observed, "We owe a lot to the Indians, who taught us how to count, without which no worthwhile scientific discovery could have been made." Gopal Kapur, a project management consultant whose life began in India, will guide us on an exploration of India's relationship with the British Raj from 1858 to independence in 1947. We'll hear that the British government considered auctioning off the Taj Mahal for the current equivalent of \$7 million and that India's percentage of world GDP declined from nearly 25 percent after the East India Company arrived to 2 percent when direct British rule ended.



## Villains and Scalawags in our National Park System

**\$15** **Tues., June 10**  
**10 to 11:30 a.m. | Zoom**

Presenter: **David Kroese**

When we think about the more than 400 units in our National Park System, we tend to imagine places to experience nature's beauty and to learn American history where it was made. Returning OLLI favorite David Kroese's latest courses about the park system introduces us to some of our country's darker stories and the individuals who experienced those events. As usual, our guide has been there, because he's one of only a very few folks who has visited all the park system locations and he's got the photographic images to prove it.

## Those Plucky Women of WWII

**\$15** **Wed., June 11**  
**12 to 1:30 p.m. | Zoom**

Presenter: **Kayleen Reusser**

During World War II, 350,000 American women joined the Army, Navy, Coast Guard, and Army Air Corps despite many Americans' disapproval of women in uniform. They persevered, soaring above doubting expectations. From towing targets for live ammunition practice to nursing wounded men in France, they responded wholeheartedly during their country's time of need and helped to win the war, changing both military and American life through their service and sacrifice. Kayleen Reusser, who has written 10 books about World War II, will introduce us to the stories based on interviews for her book, "Born To Be Soldiers: Those Plucky Women of WWII."

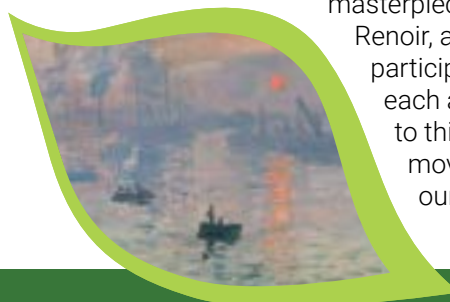


## Impressionism: A Radical Revolution in Art

**\$15** **Thurs., June 12**  
**10 to 11:30 a.m. | Zoom**

Presenter: **Dr. Deborah Robin**

Now considered some of the most beautiful art ever created, Impressionist works were originally rejected, and even mocked by critics and the public. Explains Dr. Deborah Robin, a retired university educator and administrator and enthusiastic OLLI presenter on art history. Impressionists represented a radical departure from the established techniques of the Renaissance by trying to capture an impression of a scene rather than a detailed image and emphasized color and light. Through masterpieces by Manet, Monet, Renoir, and Degas, class participants will see how each artist contributed to this revolutionary movement that changed our perception of art.





# Short Courses



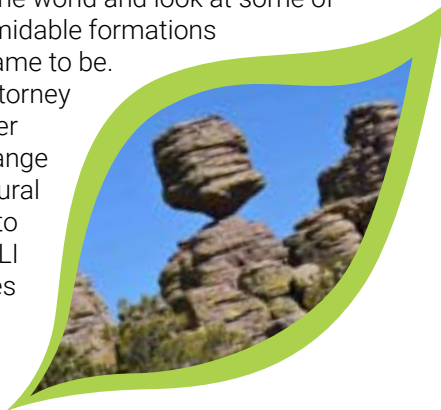
## Formidable Formations

**\$15** Mon., June 16  
10 to 11:30 a.m. | Zoom

Presenter: **Dr. Stephenie Slahor**

Our planet has some sites where geology has created strange, amazing, and incredible formations. Popular OLLI presenter Dr. Stephenie Slahor will guide our tour as we Zoom around the world and look at some of these fascinating formidable formations and learn how they came to be.

Dr. Slahor, a retired attorney and instructor, puts her passion for a broad range of subjects about natural sciences and history to good use creating OLLI classes for universities around the nation.



## Over the Sea to Skye: Flora MacDonald and the Women of the Jacobite Cause

**\$30** Tues., June 17, 24, July 1  
2 to 3:30 p.m. | ED172 and Zoom

Presenter: **Brenna Barks**

Flora MacDonald's portraits hang in the British and Scottish National Portrait Galleries and her statue overlooks Inverness. Her exploits were spotlighted in the 1948 film "Bonnie Prince Charlie" and seven decades later in "Outlander" on TV. MacDonald may be the most famous, but she wasn't even the most active woman in the Jacobite cause. Fresno State staffer and fashion historian Brenna Barks introduces us to "Colonel Anne," Jeanie Cameron and Margaret Ferguson, who played a much more forceful role in these last Scottish rebellions. The course explores the Jacobite uprisings and the roles of women in Scotland – and Highland society specifically.

## Bay Area Figurative Art Movement

**\$20** Mon., June 16, 23  
1 to 2:30 p.m. | Zoom

Presenter: **Diane Levinson**

The Bay Area Figurative Art Movement is considered by many to be that region's singular contribution to 20th-century art. In the 1950s, San Francisco-based abstract artists David Park, Richard Diebenkorn, and Elmer Bischoff reincorporated subject-matter in defiance of the pure abstraction favored by the New York School's Mark Rothko, Jackson Pollock, et al. The evolution of the Bay Area Figurative Movement was culturally associated with

the rise of beat culture in San Francisco and West Coast jazz. Helping us learn all about it is Diane Levinson, an artist, art, and art history instructor, and arts advocate.



# Short Courses



## Out of the Drafts: Preserving Your Life's Stories

**\$50** Mon., Wed., Fri., June 23, 25, 27,  
30, July 2 | 10 to 11:30 a.m.  
ED169 (Comp Lab) | max. 30

Presenter: **Marisa Mata**

Many of us have started to write something and never quite finished or maybe we've written and rewritten, but then don't know how to share it. Writer, artist and educator Marisa Mata, a Fresno State staffer, will offer prompts to OLLI class participants to generate their own original pieces of writing. There will be time to put examples into practice in the class and receive critiques, too. The class also will offer techniques to preserve our work in unique collections that we can share with family and friends: Book art and design tools, printing methods and hand-binding skills.

## Exploring the Summer Sky

**\$15** Mon., June 30  
1 to 2:30 p.m. | ED 172 and Zoom

Presenter: **Larry Parmeter**

While any time during the year is good for starwatching, the summer months bring special viewing with a myriad of exceptional objects in the nighttime skies. From the dazzling features in Sagittarius, near the center of our Milky Way galaxy, to the annual spectacle of the Perseid Meteor Shower in August, summer is a special time to look up at the heavens. Larry Parmeter is a retired high school teacher, current OLLI student and teacher with a passion for astronomy, who invites us to take a tour of the summer skies. You'll never view it in the same way again.



## True Blue

**\$15** Tues., July 1  
12 to 1:30 p.m. | Zoom

Presenter: **Eleanor Schrader**

Artists have used color to create an array of symbolism, emotions, and socio-political meanings within their historical context and utilized their knowledge of color to portray mood, light, depth, and point of view. Class participants will discuss the history of the color blue and its meanings in various societies and cultural contexts, as well as materials and processes used to make blue. Art and architecture history educator Eleanor Schrader, who is a frequent Fresno State OLLI presenter, will lead our consideration of a variety of paintings throughout history to understand intention and the stories behind them.



# Short Courses



## Publish Your Writing

**\$40** Mon., July 7, 14, 21, 28 | max. 30  
10 to 11:30 a.m. | ED169 and Zoom

Presenter: **Bonnie Hearn Hill**

Whether you're experienced or a beginner, you'll find guidance and support in this workshop geared to take you to the next level in your writing. Want to finish your first essay? Ready to submit a short story or novel for publication? In each session, novelist and writing mentor Bonnie Hearn Hill will teach one aspect of publishing – nonfiction/memoir, fiction, poetry – and conclude with the challenges of publishing in today's market. Optional class exercises will help OLLI members develop their writing skills and trust their vision and voice while turning off "editor brain."



## The Enigma of Brilliance

**\$30** Mon., July 7, 14, 21  
1 to 2:30 p.m. | Zoom

Presenter: **Gopal Kapur**

They were three 20th-century larger-than-life men who were known for their brilliant minds and willingness to accept daunting challenges. Industrialist Henry Ford, architect Frank Lloyd Wright, and inventor and entrepreneur Steve Jobs were world-changers -- renowned in their lifetime. Each man's work had impact not only on millions of lives at the time, but millions more for many decades after they died. Led by Gopal Kapur, who teaches about management, our course will examine their successes and also their failures in marriage, parenthood, collegiality, bigotry, and, in Ford's case, antisemitism.

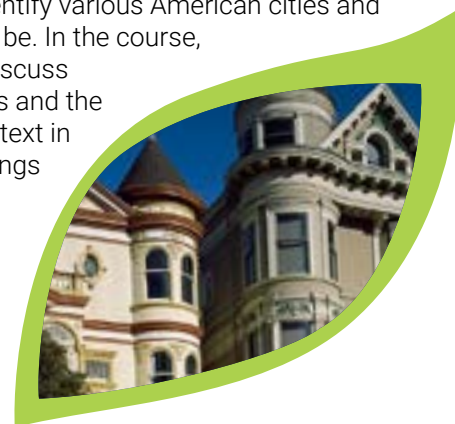


## Buildings that Define American Cities

**\$40** Tues., July 8, 15, 22, 29  
10 to 11:30 a.m. | Zoom

Presenter: **Eleanor Schrader**

Art and architecture history instructor Eleanor Schrader adds to her Fresno State OLLI résumé leading to an exploration of how every city's particular feel is defined by its architecture, demographics, geography, climate, people, and cultures over the years. From historical to contemporary structures, we'll learn about the iconic structures that identify various American cities and how they came to be. In the course, participants will discuss architectural styles and the socio-political context in which these buildings were created in San Francisco, Portland, Seattle, and Denver.



## Great Science Stories

**\$40** Tues., July 8, 15, 22, 29  
12 to 1:30 p.m. | Zoom

Presenter: **Dr. Johnnie Hendrickson**

Science often teaches factoids unmoored from context, but humans learn best through stories. In this course, we'll be exploring scientific discoveries together with the context in which they occurred for a richer, more fuller understanding of the relationship between science and society. For example, did you know that the scientist who accurately determined Earth's age was also directly responsible for the removal of leaded gasoline from the U.S. market? Or that one of the most important discoveries of the 19th century was the result of a "failed" experiment? This class explores the stories behind the science in hopes of understanding how and why it matters, and what has happened as a result.



# Short Courses



## The Art of Fabergé

**\$15** Wed., July 9  
10 to 11:30 a.m. | Zoom

Presenter: **Eleanor Schrader**

The House of Fabergé was a jewelry firm founded in 1842 in Saint Petersburg, Russia, by Gustav Fabergé, followed by his sons and grandsons. The firm was famous for designing elaborate jewel-encrusted Fabergé eggs for the Russian Tsars and other work of high-quality and intricate detail. Led by art instructor Eleanor Schrader, a popular presenter in Fresno State's OLLI program, we'll learn about the celebrated series of 50 Imperial Easter eggs created for the Russian Imperial family from 1885 to 1916. She will also direct our attention to some of Fabergé's more-popular creations: miniature hardstone carvings of people, animals, and flowers carved from semi-precious or hardstones and embellished with precious metals and stones.



## Owl Be Right with You

**\$15** Thurs., July 10  
10 to 11:30 a.m. | Zoom

Presenter: **Dr. Stephenie Slahor**

If about all you know about owls begins and ends with "wise" and "spotted", you have a learning treat in store. Dr. Stephenie Slahor, whose passion for natural history has been shared with OLLI members at Fresno State and many other universities, will fill in the blanks in our knowledge. Her course will explore North America's owls and their characteristics, anatomy, and, extraordinary senses. Participants will learn why owls are considered symbols of knowledge and discernment, too.



## The Cold War: Prologue to Epilogue

**\$40** Wed., July 9, 16, 23, 30  
12 to 1:30 p.m. | Zoom

Presenter: **Linas Kojelis**

The Cold War between the Soviet Union and the American-led NATO alliance often is dated between 1947 and 1991. However, the roots of divergence between East and West go back hundreds of years. Linas Kojelis, who has extensive experience in international affairs from both the business and government perspectives, is our guide to deep cultural differences, key events, and people involved. We'll review the rise of communist governments in Eastern Europe; the Berlin Airlift and the Wall; proxy wars; 1970s détente; Afghanistan and the "Evil Empire"; the weapons build-up before 1991; and today's crisis in Ukraine.

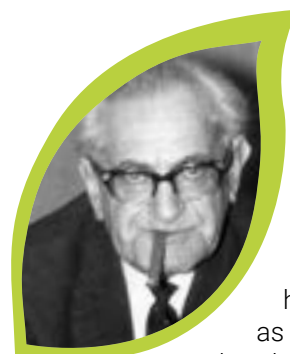


## Nazi Hunter Fritz Bauer — A Heroic Story!

**\$15** Thurs., July 24  
2 to 3:30 p.m. | Zoom

Presenter: **Anette Isaacs**

Sixty-five years ago, Israeli Mossad agents captured Adolf Eichmann in Argentina, to which he escaped following World War II after his leadership in the



Holocaust. Eichmann's historic arrest was made possible with critical intel from German Jew Fritz Bauer, the Hessian attorney general. In the class, historian Anette Isaacs, a familiar presenter in Fresno State's OLLI curriculum from her base in Florida, will help us understand Bauer's role as a courageous figure who single-handedly initiated the Auschwitz Trials in the 1960s that forced post-war German society to confront its guilt and denial about the Holocaust.



# Adventures



## Public Art: Discussion, Place, Interpretation

**Mon., June 9 | 9 to 11 a.m.**

**Conley Art 101**

**\$20 members | \$25 non-members**

**Presenter: Chris Lopez**

This course offers a unique opportunity to explore the often-overlooked significance of public art, exemplified by pieces such as Alan Bertoldi's Sidewinder, a permanent installation on the Maple Mall. Our guide is multidisciplinary artist Christopher A. Lopez, a professor of art theory and program director of the Center for Creativity and the Arts at Fresno State. The class goal is to deepen our appreciation for such works through engaging discussions and a guided walk through Wings of the City on campus. Participants will have the

opportunity to actively connect with these installations, providing a deeper appreciation for their surroundings and the unique perspectives each person brings to interpreting such artworks.

*Paper, pencil and/or ink pen*



## A Day at the Park

**Sat., July 12 | 10 a.m. to 1 p.m.**

**Bus trip to San Francisco**

**\$20 members | \$25 non-members**

It's a special day when that park is Oracle Park in San Francisco and the Giants host the defending World Champion Los Angeles Dodgers in a rivalry that began in 1889. And it is an even better day when you're transported by chartered bus (no parking hassle or cost) and you've got seats in the premium Lower Box Section 105 on the first-base side.

Everyone also receives \$25 in Splash Value Credit to spend in the stadium. Afterward, we'll head home with a stretch-and-refresh stop along the way, before returning to campus around 9 p.m. A long and perfect summer day for any baseball fan.

*Please be aware that this is an all-day trip. The bus will depart from Fresno State and return after the event. We recommend wearing clothing suitable for the weather conditions and comfortable walking shoes for ease during the day. No Refunds.*

**SOLD OUT**



## Chanticleer Shakespeare Co. presents William Shakespeare's RICHARD III

**Sat., June 14 | 2 p.m. | Max. 50.**

**Warnors Theatre**

**1400 Fulton St., Fresno, CA 93721**

**\$25 members | \$30 non-members**

"Follow the bloody rise and fall of Shakespeare's most delicious villain in this breakneck, white-knuckle race to the throne. This groundbreaking production of "Richard III," one of Shakespeare's earliest plays, has been adapted by Chanticleer Artistic Director Blake Ellis, a Valley native and veteran actor, and is directed by Brad Myers, the award-winning director and nationally recognized theater educator who just retired from Fresno State after 42 years. Chanticleer Shakespeare Co. says "Richard III" will have audiences pinned to their seats in downtown Fresno's historic Warnors Theatre from Act 1 until the blood-drenched finale."

*Does not include transportation or parking*



# SUMMER 2025

## Calendar

### June

MONDAY	TUESDAY	WEDNESDAY	THURSDAY	FRIDAY	SATURDAY
<b>2</b>	<b>3</b>	<b>4</b>	<b>5</b>	<b>6</b>	<b>7</b>
	<b>10 a.m.</b> Climate Resilience in Fresno: Solutions for a Changing Valley <b>1 p.m.</b> Play Analysis: Shakespeare's Richard III	<b>1 p.m.</b> Let's Talk Sports	<b>10 a.m.</b> Current Events <b>1 p.m.</b> Play Analysis: Shakespeare's Richard III	<b>11 a.m.</b> British Raj in India: A Troubled Legacy <b>1 p.m.</b> Games You Love to Play	
<b>9</b>	<b>10</b>	<b>11</b>	<b>12</b>	<b>13</b>	<b>14</b>
<b>9 a.m.</b> Public Art: Discussion, Place, Interpretation	<b>10 a.m.</b> Villains and Scalawags in Our National Park System <b>1 p.m.</b> Play Analysis: Shakespeare's Richard III	<b>12 p.m.</b> Those Plucky Women of WWII	<b>10 a.m.</b> Impressionism: A Radical Revolution in Art <b>1 p.m.</b> The Magic of Service: Creating a Better You and a Better World	<b>11 a.m.</b> British Raj in India: A Troubled Legacy	<b>2 p.m.</b> Chanticleer Shakespeare Co. presents William Shakespeare's RICHARD III
<b>16</b>	<b>17</b>	<b>18</b>	<b>19</b>	<b>20</b>	<b>21</b>
<b>10 a.m.</b> Formidable Formations <b>1 p.m.</b> Bay Area Figurative Art Movement	<b>2 p.m.</b> Over the Sea to Skye: Flora MacDonald and the Women of the Jacobite Cause		<b>Juneteenth</b> Campus Closed	<b>11 a.m.</b> British Raj in India: A Troubled Legacy <b>1 p.m.</b> Games You Love to Play	
<b>23</b>	<b>24</b>	<b>25</b>	<b>26</b>	<b>27</b>	<b>28</b>
<b>10 a.m.</b> Out of the drafts: Preserving your life's stories <b>1 p.m.</b> Bay Area Figurative Art Movement	<b>2 p.m.</b> Over the Sea to Skye: Flora MacDonald and the Women of the Jacobite Cause	<b>10 a.m.</b> Out of the drafts: Preserving your life's stories		<b>10 a.m.</b> Out of the drafts: Preserving your life's stories	
<b>30</b>					
<b>10 a.m.</b> Out of the drafts: Preserving your life's stories <b>1 p.m.</b> Exploring the Summer Sky					

# SUMMER 2025

## Calendar

July

MONDAY	TUESDAY	WEDNESDAY	THURSDAY	FRIDAY	SATURDAY
	<b>1</b>	<b>2</b>	<b>3</b>	<b>4</b>	<b>5</b>
		<b>10 a.m.</b> Out of the drafts: Preserving your life's stories	<b>10 a.m.</b> Current Events	<b>Independence Day</b>	
	<b>12 p.m.</b> True Blue <b>2 p.m.</b> Over the Sea to Skye: Flora MacDonald and the Women of the Jacobite Cause	<b>1 p.m.</b> Let's Talk Sports			
<b>7</b>	<b>8</b>	<b>9</b>	<b>10</b>	<b>11</b>	<b>12</b>
<b>10 a.m.</b> Publish Your Writing <b>1 p.m.</b> The Enigma of Brilliance	<b>10 a.m.</b> Buildings that Define American Cities <b>12 p.m.</b> Great Science Stories	<b>10 a.m.</b> The Art of Fabergé <b>12 p.m.</b> The Cold War: Prologue to Epilogue	<b>10 a.m.</b> Owl Be Right with You <b>2 p.m.</b> Separating Church from State	<b>9:30 a.m.</b> Book Club	<b>All day trip</b> A Day at the Park
<b>14</b>	<b>15</b>	<b>16</b>	<b>17</b>	<b>18</b>	<b>19</b>
<b>10 a.m.</b> Publish Your Writing <b>1 p.m.</b> The Enigma of Brilliance	<b>10 a.m.</b> Buildings that Define American Cities <b>12 p.m.</b> Great Science Stories	<b>12 p.m.</b> The Cold War: Prologue to Epilogue			
<b>21</b>	<b>22</b>	<b>23</b>	<b>24</b>	<b>25</b>	<b>26</b>
<b>10 a.m.</b> Publish Your Writing <b>1 p.m.</b> The Enigma of Brilliance	<b>10 a.m.</b> Buildings that Define American Cities <b>12 p.m.</b> Great Science Stories	<b>12 p.m.</b> The Cold War: Prologue to Epilogue	<b>2 p.m.</b> Nazi Hunter Fritz Bauer—A Heroic Story!	<b>1 p.m.</b> Games You Love to Play	
<b>28</b>	<b>29</b>	<b>30</b>	<b>31</b>		
<b>10 a.m.</b> Publish Your Writing	<b>10 a.m.</b> Buildings that Define American Cities <b>12 p.m.</b> Great Science Stories	<b>12 p.m.</b> The Cold War: Prologue to Epilogue	<b>1 p.m.</b> Thank You for Your Service		

# How it Works



## Make your Selections

- ▶ Review this semester's offerings and make your selections. You may choose additional courses and activities at a later date.
- ▶ It may be helpful to use the enclosed form as a worksheet before using the online registration system. That way you'll also have a copy for future reference.
- ▶ Registrations are processed on a first-come, first-served basis. Some activities may have participant caps.
- ▶ **OLLI courses and activities are self-supporting - a minimum enrollment is required.**
- ▶ **Course fees vary according to course length and are non-refundable and non-transferable.**

## Guidance for hybrid OLLI offerings

- ▶ When you register, you will be asked to choose **"IN-PERSON"** or **"ZOOM"** for our hybrid classes.
- ▶ If you register for an in-person course and change your mind to attend online, please notify us so we can offer your in-person seat to those on the waiting list.
- ▶ ***We do our best to offer hybrid classes. However, those participating online may not be able to fully participate in the discussion due to technology limitations. We are committed to providing the best experience possible, recognizing that glitches may happen. We thank you for your understanding.***



## Register Online

- ▶ It's super quick and easy to register and pay online. No Math. No Envelopes. No Stamps.
- ▶ Just register online, pay through the secure payment portal, and you'll be registered in a flash.
- ▶ **Go to [fresnostate.edu/olli](https://fresnostate.edu/olli)**
- ▶ **First time?** When you first use the online registration system, you will be prompted to provide information and you'll select a username and password.  
**SAVE YOUR PASSWORD!!**
- ▶ **Returning Member?** All your information is already saved – just login with your password and make your selections!



## Register By Mail

- ▶ Complete all sections on both sides of the registration form, place in your envelope, affix a stamp and pop it in the mail. Our address is on the registration form.
- ▶ If you need help, please call **559.278.0008** and we will answer your questions.





# How it Works



## Install Zoom

- ▶ Zoom is the platform we use for our OLLI offerings. It takes just a minute to get a **FREE** Zoom account.
- ▶ Please do not be intimidated. You can learn anything!
- ▶ From your desktop or laptop computer, phone or tablet:
  - Apple device (iPhone, iPad): Download Zoom from the Apple App Store.
  - Android device (phone or tablet that's not an Apple product): Download Zoom from the Google Play Store.
  - Open the app or go to [www.zoom.us](http://www.zoom.us) and follow the instructions on screen.
- ▶ To participate in live video, Zoom will use the camera on your device (phone, laptop, tablet) if it has one. If you do not have a camera on your device, you can listen in by phone but others won't be able to see you.
- ▶ **NOTE:** You do not need to upgrade or pay for your account to participate in OLLI Zoom events. Our license is through the university and allows you to participate fully. If you decide to host your own Zoom meetings with family, friends or interest groups, you may wish to upgrade someday - but there is no need to for OLLI.
- ▶ If you cannot log in to a video platform, you can listen to classes via telephone. The phone number to dial in to will be provided once you register.
- ▶ We do our best to offer these hybrid classes; however, those joining us on Zoom may not be able to fully participate.



## Share Your OLLI Enthusiasm

- ▶ Invite your friends and family to join OLLI. Learning is even more fun when shared with others.
- ▶ Follow Fresno State OLLI on Facebook at [www.facebook.com/FresnoStateOLLI/](http://www.facebook.com/FresnoStateOLLI/)
- ▶ Post about your OLLI classes on your social media and tag "us" Fresno State OLLI.

## OLLI Classroom Closure

### Summer 2025

We're excited to announce that the OLLI classroom, ED140, will undergo some much-needed upgrades over the summer. What does this mean for you?

There will be limited in-person classes during this time, and we appreciate your patience as we navigate this temporary change. While we know how much you enjoy meeting in person, these upgrades come with a few small sacrifices, but they'll help us enhance the classroom experience in the long run.

In-person classes will still be held in the Kremen Education Building, though they'll be in a different room. The new classroom will be easy to find, with clear signage posted to guide you.

Once A Month offerings will be in the Resnick Student Union. We'll do our best to minimize any inconvenience.

This brief closure will allow us to return even stronger in the fall, ready for a fresh start with an upgraded space!





# SUMMER 2025 Registration Form

- ☐ New Member  
☐ Returning Member

- ▶ Register online at: [fresnostate.edu/olli](https://fresnostate.edu/olli)  
▶ Use one registration form per member

## Member Information

Name

Mailing Address

City

State

Zip

Email Address

Phone

Cell Phone

What is your occupation (current or previous)

Are you a Fresno State Alumna/us

☐ Yes

☐ No

Year of graduation

Degree:

Your age group

☐ 50-60

☐ 61-70

☐ 71-80

☐ 81-90

☐ 90+

☐ Other:

## Summer 2025 Selections

Membership Fee

Discount Code:

Once A Month

OLLI Courses

Adventures

Donation

Total Before Discount Applied

Total Due with Discount (if applicable)

## Donation

OLLI members and friends of the Osher Institute are encouraged to consider making a tax deductible donation to the Fresno State Osher Lifelong Learning Institute.

Your donation helps us continue to provide excellent, lifelong learning opportunities and to keep OLLI fees affordable.

## Payment

For best results use our online ordering tool at [fresnostate.edu/olli](https://fresnostate.edu/olli)

### Paying by Check:

Make payable to FRESNO STATE FOUNDATION

Please return this completed form and payment to:

### Fresno State OLLI

5005 N. Maple Ave. M/S ED76

Fresno, CA 93740-8025

Questions? 559.278.0008 | [osher@csufresno.edu](mailto:osher@csufresno.edu)

**Credit Card:** If you are paying by credit card, please complete the form below. This information will be destroyed after registration is processed.

Card Type: ☐ Visa ☐ Master Card ☐ AmEx

Name on the card:

Card Number:

Expiration Date:

Security Code:

## Where did you hear about us?

☐ Previously a member

☐ Friend

☐ Newspaper

☐ Catalog

☐ Online

☐ Other:

# Selections



Select	Start	ONCE A MONTH	
	6/4	Let's Talk Sports – <b>IN PERSON</b>	\$20
	6/5	Current Events – <b>IN PERSON</b>	\$20
	6/5	Current Events – <b>ZOOM</b>	\$20
	6/6	Games You'll Love to Play – <b>IN PERSON</b>	\$30
	7/11	Book Club – <b>IN PERSON</b>	\$20
	7/11	Book Club – <b>ZOOM</b>	\$20
Select	Start	SHORT COURSES	
	6/3	Climate Resilience in Fresno: Solutions for a Changing Valley – <b>IN PERSON</b>	\$15
	6/3	Climate Resilience in Fresno: Solutions for a Changing Valley – <b>ZOOM</b>	\$15
	6/3	Play Analysis: Shakespeare's Richard III – <b>ZOOM</b>	\$30
	6/6	British Raj in India. A Troubled Legacy – <b>ZOOM</b>	\$30
	6/10	Villains and Scalawags in our National Park System – <b>ZOOM</b>	\$15
	6/11	Those Plucky Women of WWII – <b>ZOOM</b>	\$15
	6/12	Impressionism: A Radical Revolution in Art – <b>ZOOM</b>	\$15
	6/16	Formidable Formations – <b>ZOOM</b>	\$15
	6/16	Bay Area Figurative Art Movement – <b>ZOOM</b>	\$20
	6/17	Over the Sea to Skye: Flora MacDonald and the Women of the Jacobite Cause – <b>IN PERSON</b>	\$30
	6/17	Over the Sea to Skye: Flora MacDonald and the Women of the Jacobite Cause – <b>ZOOM</b>	\$30
	6/23	Out of the drafts: Preserving your life's stories – <b>IN PERSON</b>	\$50
	6/30	Exploring the Summer Sky – <b>IN PERSON</b>	\$15

## Color Codes



Please note the color coding of each course, keynote talk, adventure and Once A Month on this registration form to determine whether it is offered in person only, online via Zoom only, or via a hybrid of both.

If the item is offered as a **hybrid**, it will be listed twice for the same date, please register for **either IN PERSON** or **ZOOM** option.

**GREEN = IN PERSON**  
**BLUE = ZOOM**

*By participating in OLLI offerings, when you register you agree that you grant permission for your name and likeness to be visible to OLLI staff, other members and the instructor - just like when you attend offerings in person.*

# Selections *(continued)*



Select	Start	SHORT COURSES	
	6/30	Exploring the Summer Sky – <b>ZOOM</b>	\$15
	7/1	True Blue – <b>ZOOM</b>	\$15
	7/7	Publish Your Writing – <b>IN PERSON</b>	\$40
	7/7	Publish Your Writing – <b>ZOOM</b>	\$40
	7/7	The Enigma of Brilliance – <b>ZOOM</b>	\$30
	7/8	Buildings that Define American Cities – <b>ZOOM</b>	\$40
	7/8	Great Science Stories – <b>ZOOM</b>	\$40
	7/9	The Art of Fabergé – <b>ZOOM</b>	\$15
	7/9	The Cold War: Prologue to Epilogue – <b>ZOOM</b>	\$40
	7/10	Owl Be Right with You – <b>ZOOM</b>	\$15
	7/24	Nazi Hunter Fritz Bauer—A Heroic Story! – <b>ZOOM</b>	\$15
Select	Start	ADVENTURES	
	6/9	Public Art: Discussion, Place, Interpretation – <b>MEMBER</b>	\$20
	6/9	Public Art: Discussion, Place, Interpretation – <b>NON-MEMBER</b>	\$25
	6/14	Chanticleer Shakespeare Co. presents William Shakespeare's RICHARD III – <b>MEMBER</b>	\$25
	6/14	Chanticleer Shakespeare Co. presents William Shakespeare's RICHARD III – <b>NON-MEMBER</b>	\$30
	7/12	A Day at the Park – <b>MEMBER</b>	<b>SOLD OUT</b>
	7/12	A Day at the Park – <b>NON-MEMBER</b>	<b>SOLD OUT</b>
		<b>TOTAL</b>	

## Color Codes



Please note the color coding of each course, keynote talk, adventure and Once A Month on this registration form to determine whether it is offered in person only, online via Zoom only, or via a hybrid of both.

If the item is offered as a **hybrid**, it will be listed twice for the same date, please register for **either IN PERSON** or **ZOOM** option.

**GREEN = IN PERSON**  
**BLUE = ZOOM**

*By participating in OLLI offerings, when you register you agree that you grant permission for your name and likeness to be visible to OLLI staff, other members and the instructor - just like when you attend offerings in person.*





Non-Profit  
Organization  
U.S. Postage  
**PAID**  
Fresno, CA  
Permit No. 262

**FRESNO STATE**

**Continuing and Global Education**  
California State University, Fresno  
5005 N. Maple Ave. M/S ED76  
Fresno, CA 93740-8025

**CHANGE SERVICE REQUIRED**

## **OLLI Advisory Council**

Nancy Busch  
Dawn Diestelkamp  
Rob Hayden  
Nancy Kast  
Lanny Larson  
MaryEllen Ogle  
Lois Rigsbee  
Valerie Vuicich

Scott Moore, PhD  
*Dean, Continuing and  
Global Education*

Pamela Dyer,  
*Executive Director*

Rikki Alvarez,  
*Program Manager*

---

**559.278.0008**

email: [osher@csufresno.edu](mailto:osher@csufresno.edu)  
[fresnostate.edu/olli](http://fresnostate.edu/olli)

